

Automate Link Exchange™ – Installation Guide



Automate Link Exchange™ is a software to help you automate and better organize reciprocal link building and management. With this software, you can increase website traffic inexpensively, save time and money to manage reciprocal link building, and much more..

System Requirements:

The software is a server-side software. It can run in any server (Unix, Linux, Windows) with the following requirements:

- PHP 4.1 or above
- MySQL 3.23 or above
- Any OS that supports PHP, Linux and Unix preferred and Windows supported.

Contact

If you have technical problem or want to establish partnership with us, you can contact us via <http://www.linkautomate.com>

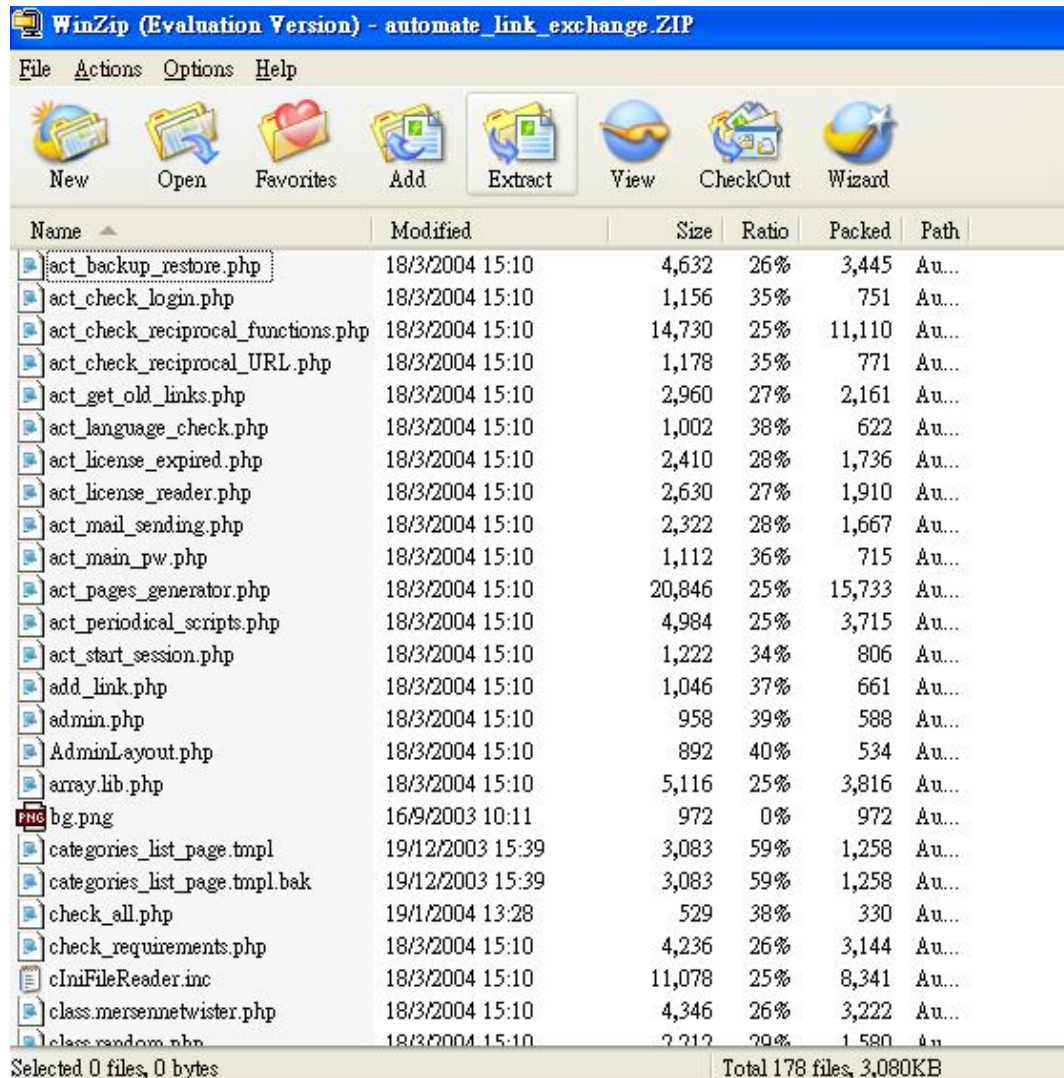
Installation of Automate Link Exchange – Step by Step

The installation process is very simple and you can complete it within 7 -12 minutes. If you have any problem, you can visit <http://www.linkautomate.com/help.html>

Step 1: Unzip the download file

Unzip all the files to your local drive, e.g. C drive of your desktop.

You may download Winzip to unzip the files if you do not install any compression software.



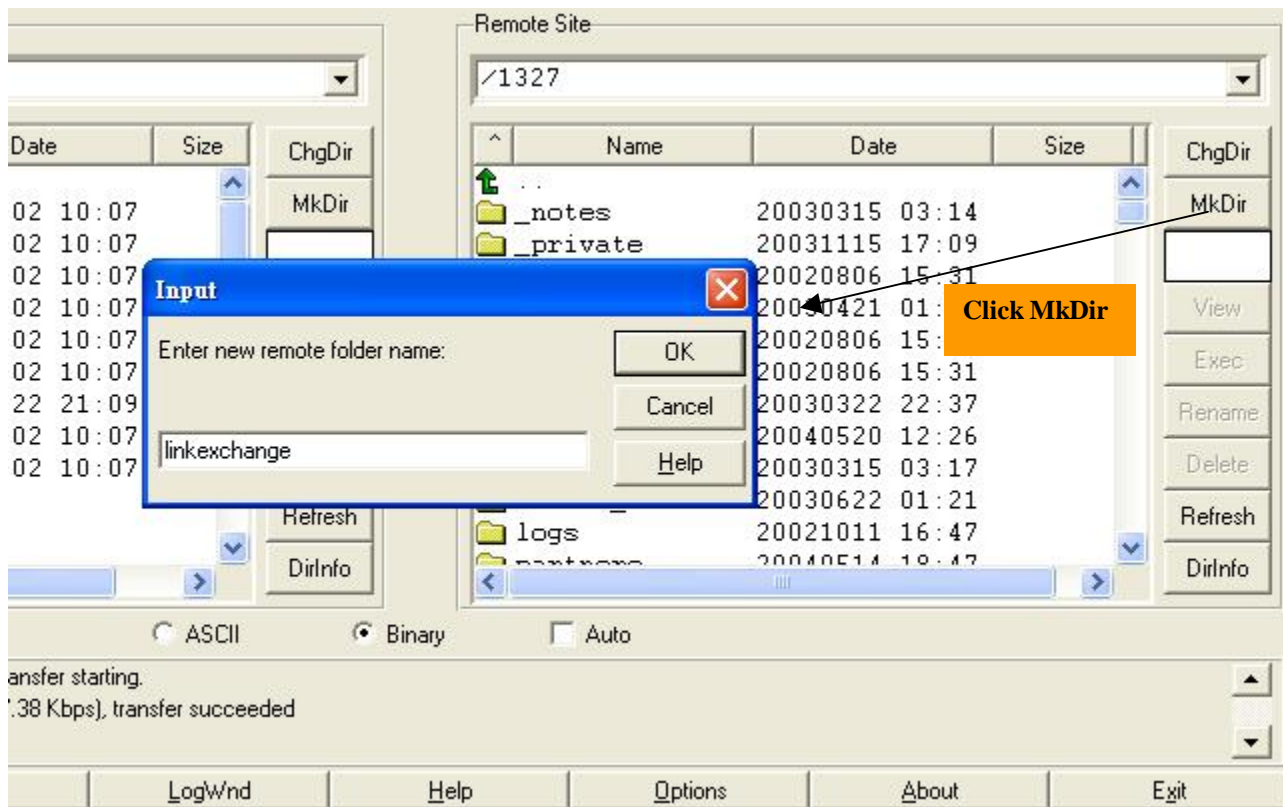
Step 2: Internet connection

Connect to Internet

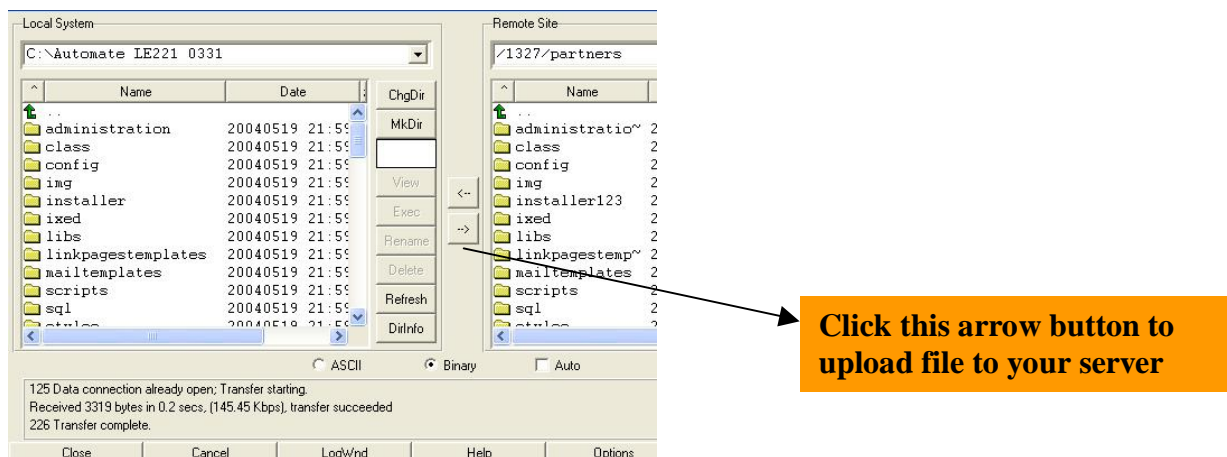
Step 3: Create a folder in web server (Software folder) and Upload the software files to server.

Create a folder on your web site (e.g. 'linksexchange'). The folder should be under publicly access area. E.g. create the folder under the directory name public_html.

This folder will store Automate Link Exchange™. To create a folder, you can use MKDIR function if you are using Unix/Linux server. Alternatively, you can create it using FTP application software such as WSFTP LE. WSFTP LE can apply to both Unix, Linux, and Windows server.



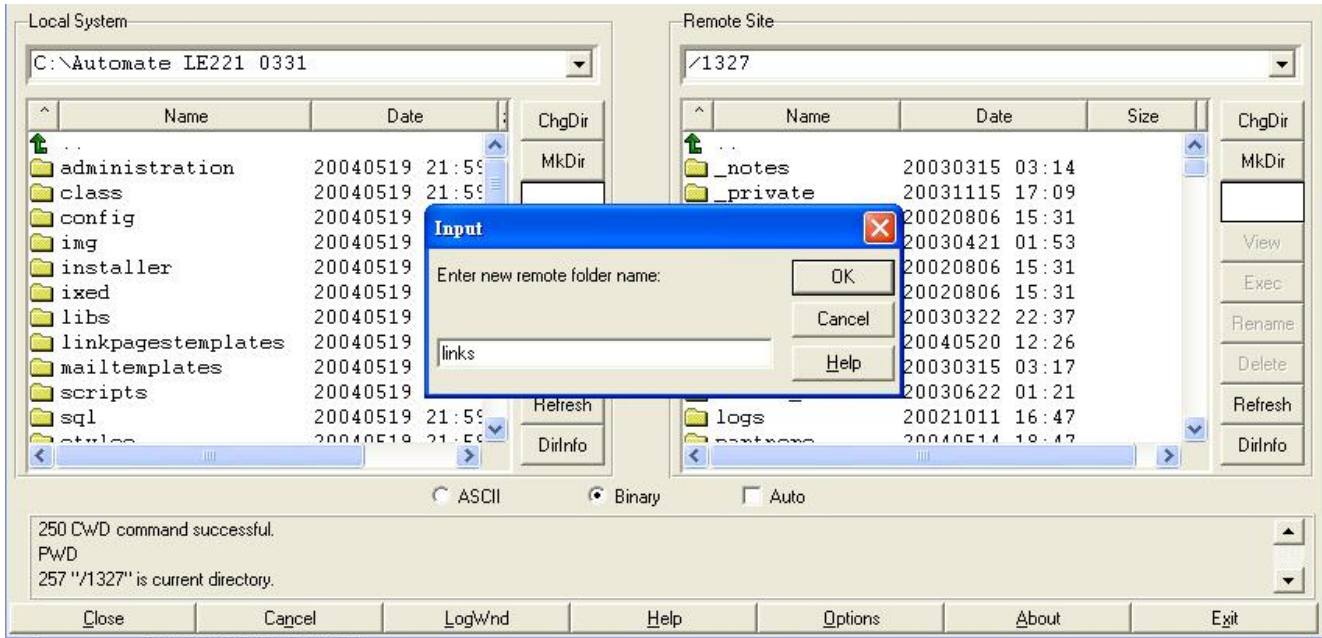
Upload all the files including the sub-directories to the software folder (e.g. 'linksexchange')



Step 4: Create a folder to store link pages (link page folder)

Create a folder (e.g. name it as 'links' or any name you like) in your website for storing generated link pages. – Don't mix it up with software folder (created in step 3). All link pages generated in the future will be automatically stored in this folder.

The folder should be made in publicly access area. E.g. create the folder under the directory name public_html.



Step 5: Setup a MYSQL database through your web host's control panel

Create a new MYSQL database. Also, create a database user and set the corresponding password. Finally, add the database user to the newly created database.

If you are using a shared web hosting environment and cpanel is provided, you can set it up by using the function MYSQL manager. It is very simple. But if you have problem, contact your web hosting company to seek support.



You can see the above icon or similar icon in the web-based control panel provided by your web hosting company.

Attention: Please jot down the database name, database user name, user password, and the MYSQL Access Host (usually the access host is called localhost but may be other name, you can contact your web host for the most accurate name) in a piece of paper for later use.

Notes:

- 1. If you are using a shared web hosting environment, your web hosting account name will also attach to your database name and database user name. E.g. If your web hosting account name is abcvmi, and you create a database called "link". The actual database name will be abcvmi_link. You can login to your web hosting account and verify it.*
- 2. It is NOT recommended but you may try using an existing database but provided that it does not contain the following table names: Users, Registry, InterfaceItems, InterfaceItemValues, Languages, LinkCategories and Links.*

Step 6 Permission setting

To allow the software run successfully, you should:

1. Change the permission setting of folder 'config' to 757. (in some servers, it may require changing to 777)

In Unix/Linux environment, use the function: `chmod 757 config`.

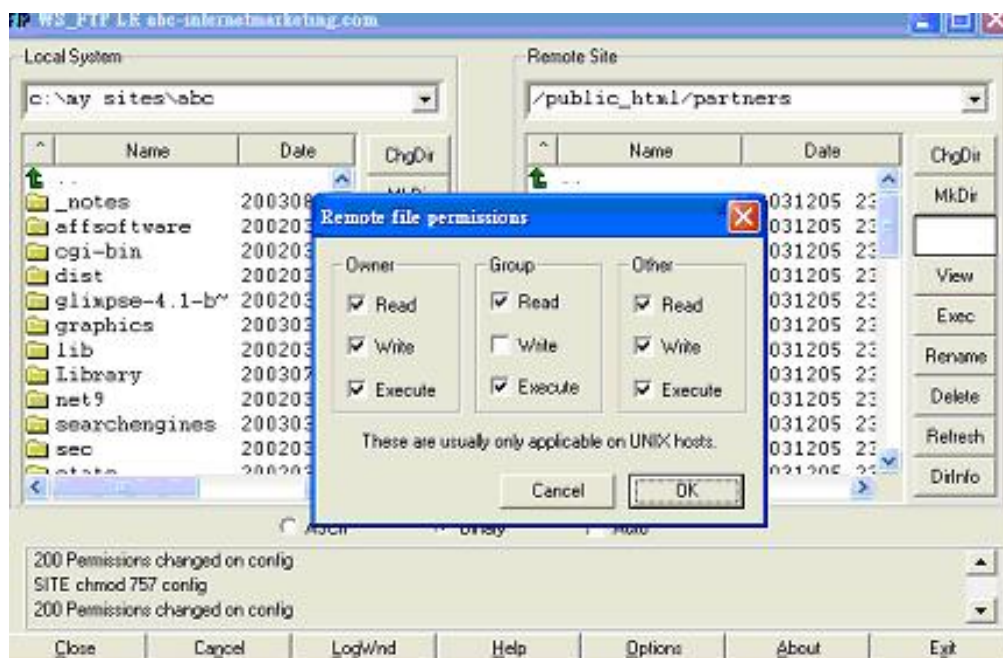
If your server is Windows server, you require to grant full 'write and read' access to the folder. In case you have problem, you can call your web hosting company to help. (notes: some web hosts have already grant "write and read" access by default)

2. Change the file `db-config.php` (located in folder config) to `chmod 757`. Command is `chmod 757 db-config.php` (in some servers, it may require changing to 777)
3. Change the permission setting of link page folder (created in step 4) to 757. (in some servers, it may require changing to 777)
4. Change the permission setting of template folder to 757. This includes folder and files "linkpagetemplate", "mailtemplates", "formstemplate" (in some servers, it may require changing to 777)

Notes:

- If you are using WSFTP, `chmod` to 757 can be defined as below: (Right click the folder Config, and you will see the Remote File Permissions Box). It can also applicable to some Windows servers depending on server setting.

- Some Windows web host companies do not allow clients to set permission themselves. You may need to ask your web host companies to grant full "write" access to your link page folder and config folder.



Step 7: Run the installer

In your browser, start the installer by typing the whole URL as follows:

<http://www.yourdomainname.com/<software folder name created in step 3>/> or

<http://www.yourdomainname.com/<software folder name created in step 3>/installer/index.php>

where yourdomainname = your domain name or your website URL

e.g. If your domain name=linkautomate.com, then the URL can be:

<http://www.linkautomate.com/linksexchange/> (Assume I store the software in a folder called linksexchange) or

<http://www.linkautomate.com/linksexchange/installer/index.php>

Step 7a: Update database parameters

The installer will ask for database parameters: MYSQL host name, database name, database user and password. You jot down in step 5.

Input the required parameters and click the 'Update Information' button.

Then, go to part 2 of the installer. Click the 'Create Database Structure and Set Default Data' button and the database structure will be created automatically.

Database Configuration

MySQL Server Host Address:

Sometimes, your web host may call it other name. So, you may contact your web host to clarify, if needed.

Database Name:

Database User:

Password for Database User Name:

Database Structure And Default Data

Don't forget to submit database configuration first



Step 7b: Setup the basic software function

In part 3 of the installer, you can enter the following information:

- **Administrator E-Mail.** The email address for communication between you and your link partners. Please input an email address you use frequently. **Please remember this administrator email address** because it is required for password retrieval in case you forget the login password in future.
- **Home URL.** The application will check whether or not the 'Reciprocal URL' page contains this URL. Usually, it is your site's URL. E.g. linkautomate.com or www.linkautomate.com
- **Link Directory URL:** Enter the URL that can access your link directory. E.g. in Step 4, you may create a link page directory called links. Hence, you may access the link directory at: <http://www.yoursite.com/links>
- **A path to where generated pages will be stored.** It means the physical path of your link page folder. E.g. URL to reach your link page can be <http://www.linkautomate.com/sites/> but physical path is /home/usr/www/sites/
*Please note that the links pages can be stored anywhere regardless of the application's location.
You can use the Auto Detection feature to detect the physical path if you don't know it.*

Options

Don't forget to create database and set a default data first

Administrator E-Mail:

Your Website URL (This link should exist on reciprocal url page):

Your Links Directory URL:

The path to where generated pages will be stored: (Click [here](#) for Auto-Detection)

Generated main page name

(* .php is recommended to have you pages updated more frequently):

Default category name:

It can end with extension .php, .htm or .html

You can use Auto-detection feature to detect the physical path. It shows you the physical path of software folder, e.g. user/home/www/linkexchange

Replace software folder's name (e.g. linkexchange) with your link page folder name created in Step 4 (e.g. links)

- A file name for the generated main page, i.e. The main page of the links directory and the extension of this file name can be .php (recommended), .htm, .html. Use the name index.php, index.htm, or index.html in most circumstance.
- Default Category Name = Your link directory will require at least one category and the first one created is called default category name.

After entering the above information, click the 'Update Information' button. They can be changed later after you login to the software.

Notes: The database configuration can be edited later using the installer. However, we don't recommend to change it.

Step 7c: Setup Administrator's username and password

Define your administrator's username and password. Then, click the 'Update Information' button.

Please note that it is VERY VERY important to remember the username. It is required for password retrieval when your forget it, and required for running the software.

Step 8: Apply Database Patches to Apply New Functions offered from Ver 2.2.X

(Final Step of installation and it is easy!!)

In your browser, access the directory installer/patches/

e.g. If the software is stored in a folder called "linksexchange", then you can access the database patches by the following:

<http://www.yourDomainName.com/linksexchange/installer/patches/>

To apply patches, follow the instruction displayed in the browser. In the selection box, there are 8 database patches for you to select. Select them one by one and click the button "Apply Patch"

Attention

Now, you completed the installation, and you can rename the 'installer' folder and run the application by opening the application URL in your browser.

If you don't rename this folder, all site visitors will be redirected to the installer, where performing actions is potentially unsafe. This is a security hole that remains while the installer directory is present on the site. We recommend you rename it to something like 'installer123' so others can't match its name.

Other Information

1. Now you can login to the software by using the administrator name and password you defined. Access the administration panel of the software, type e.g. <http://www.yourdomainname.com/linksexchange/> (linksexchange is the software folder name you defined in Step 3)

You can access the homepage of your link directory like <http://www.yourdomainname.com/links/> (link is the link page folder name you defined in Step 5)

2. The software provided some pre-defined templates to define the look and feel of your link pages, and email templates for your communication with link partners. If you want to modify the appearance, feel free to do so. You can refer to the user manual for details.

3. Should you have any problem, you can contact us at <http://www.linkautomate.com/contactus.html>

4. Mail templates editing. The system is distributed having the default mail templates. You can preset your own mail messages to be sent to visitors or to yourself. The default mail templates are contained in the folder called 'mailtemplates'. Edit the *.mtl files by using a text editor or MS Word the way you like. Remember to save it as .mtl.

- Marks like '<%%Host%%>' can be used to have the software insert special values into the e-mail body. The *.bak files are used as examples.

